

Ku-ring-gai Council Environmental Levy



Protecting and enhancing Ku-ring-gai's natural environment while involving our community in the journey.



The Environmental Levy funded team focus on:

- Best practice environmental management
- Environmental policies and strategies
- Responding to federal and state policy directions and legislative changes
- Providing input into Council's land use planning documents
- Expert environmental guidance and advice to Council and community
- Participating in research partnerships
- Preparing and reviewing environmental assessments and processes for all Council projects.

Key achievements in detail



Since 2005 the Environmental Levy has leveraged \$12,524,000 in grants.

Water and catchment management

- 16,837 tonnes of rubbish diverted from our waterways (from our Water Sensitive Urban Design (WSUD) devices, Gross Pollutant Traps (GPTs) and street sweeping) since 2012
- 896,179 kL of water reused (from our stormwater harvesting, leachate reuse and sewer mining systems) since 2012/13 (120,925kL of water harvested / reused in 20/21 equivalent to water used by 194 households and \$284,174 worth of potable water)
- 90% of total demand in 2020/21 across our reuse / harvesting sites being met by reused / harvested water
- Construction and management of 18 stormwater and rainwater harvesting and reuse systems; 2 leachate recycling systems; 2 sewer mining systems; 51 bio filter gardens; 1 roof top filter garden; 79 stormwater quality improvement devices since 2005
- 16 creek restoration projects since 2005



Energy management

- Solar PV installation at Bridge Street administration building – 20kW; Suakin Street Depot – 100kW; Ku-ring-gai Art Centre – 12kW; Thomas Carlyle Children's Centre – 19kW; North Turrumurra sewage treatment plant – 41kW; Gordon Library – 52kW; Ku-ring-gai Fitness and Aquatic Centre – 126kW, Turrumurra Library – 29kW, St Ives Library – 25kW, and East Roseville Community Centre – 16kW), leading to total installed capacity of 440kW
- LED lighting upgrades at St Ives community centre, West Lindfield community centre, Gordon Old School building, East Roseville community centre, West Pymble community centre, Ku-ring-gai Art Centre, Thomas Carlyle Children's Centre, St Ives community groups, Turrumurra Library, Gordon Library, St Ives Library, Bridge Street administration building, Suakin Street Depot, Louise Lennon Pavilion, Douglas Pickering Pavilion
- Solar hot water at Roseville Chase Oval, Thomas Carlyle Children's Centre, Lindfield Oval (Tryon Oval), Gordon Library, Turrumurra Oval, Golden Jubilee Oval, old bushland Depot, Wildflower Garden Pavilion, Wildflower Garden building and Marion St Theatre - lower floor solar
- Heat pump upgrades at St Ives Showground (grandstand) and St Ives Showground
- Improvements to HVAC (air conditioning) controls at Ku-ring-gai Fitness and Aquatic Centre, Gordon Library, Council Chambers, Thomas Carlyle Children's Centre, Gordon Library, Suakin Street Depot and Bridge Street administration building
- Energy efficiency upgrades of pool filtration and pool heating plant at the Ku-ring-gai Fitness and Aquatic Centre





- Installation of pool covers at the Ku-ring-gai Fitness and Aquatic Centre
- Intelligent lighting controls at Gordon Library;
- Installation of ceiling insulation at Louise Lennon Pavilion and Douglas Pickering Pavilion
- Installation of smart metering and/or automated monitoring systems at Ku-ring-gai Fitness and Aquatic Centre, Gordon Library, North Turramurra sewage treatment plant, Gordon golf course sewage treatment plant, St Ives Showground, 828 Pacific Highway, Suakin Street Depot, Council Chambers, Lindfield Library, Turramurra Library, St Ives Library, Ku-ring-gai Art Centre, Thomas Carlyle Children's Centre, Gordon Old School building, Bridge Street administration building, former Council nursery and building, Pymble car park Pacific Highway
- Upgrade to smart metering at all Council sites
- Installation of building management and control systems at Ku-ring-gai Fitness and Aquatic Centre, Gordon Library, Turramurra Library, St Ives Library, Bridge Street administration building, Pymble Depot)
- Purchase of one Hyundai Ioniq electric vehicle, and two Renault Kangoo electric vehicles
- Installation of 6 electric vehicle base charging stations for Council vehicle fleet
- Reduction in annual electricity costs of \$150,000
- Reduction in annual electricity use of 745 MWh

- Reduction in annual emissions of 792 tCO2e
- 13% reduction in annual energy use across all of Council's buildings and facilities.
- Transition to 30% renewable energy from the Moree Solar Farm
- Nine staff trained to Green Star Associate accreditation
- 25% reduction in annual emissions of 25% (beating the 2020 target of 20%)*
- 17% reduction in annual electricity use*
- Reduced electricity consumption is saving \$338,000 per annum*

* Based on 2020 relative to 2016 electricity consumption. Note: 2021 data not used, as lockdowns mean consumption in 2021 is considered to be lower than a representative year.





Community engagement

- Over 2400 trees planted annually at National Tree Day by 120 volunteers
- \$346,800 in community rebates, leading to annual savings of \$304,800, energy savings of 1,094MW hours and matched community investment of \$3,196,200
- \$95,350 in community rebates for 147 rainwater tanks with 697,772L of capacity and 11 raingardens and matched community investment of \$496,400
- Tailored sustainability action plans and rebates for 31 unit buildings, with \$662,000 of annual savings identified in common areas of buildings for energy management measures such as replacing lights (emergency lights, lights in car parks, foyers, passages, gardens and garbage rooms); carbon monoxide sensors in car parks; solar installations to offset energy use in common areas and a review of tariffs
- 39 Pool to Pond conversions since 2008
- 1,868 native bee hives distributed (1,020 in Ku-ring-gai and 848 across Sydney and surrounds), since 2006
- Tailored sustainability advice for 169 households and garden advice for 211 households
- 96 worm farms and 386 compost bins distributed, diverting 63 tonnes of waste from land fill
- Tailored sustainability action plans for over 260 Ku-ring-gai businesses, including 169 waste audits, 17 energy audits and 2 water audits
- Assisted 1,059 residents prepare for more extreme weather events through the Climate Wise Communities program, partnering with the SES, Red Cross, Police, RFS and Department of Health.
- Over 792 members of the Chinese / Korean community participating in sustainability workshops and bushwalks
- \$949,000 distributed to community groups for 268 local environmental projects
- 52,688 participants in Council's Loving Living Ku-ring-gai program since 2012
- 17,827 actions taken by residents to benefit the environment since 2012
- Broadening community outreach through social media - Council's Loving Living Ku-ring-gai Facebook page now has 3,022 likes; the Loving Living Ku-ring-gai Twitter account has 602 followers; the YouTube Envirotube channel now has 1,459 subscribers and the 100+ videos on the channel have registered 410,356 views; and the monthly sustainability e-news has 1,646 subscribers
- Support for two community gardens.

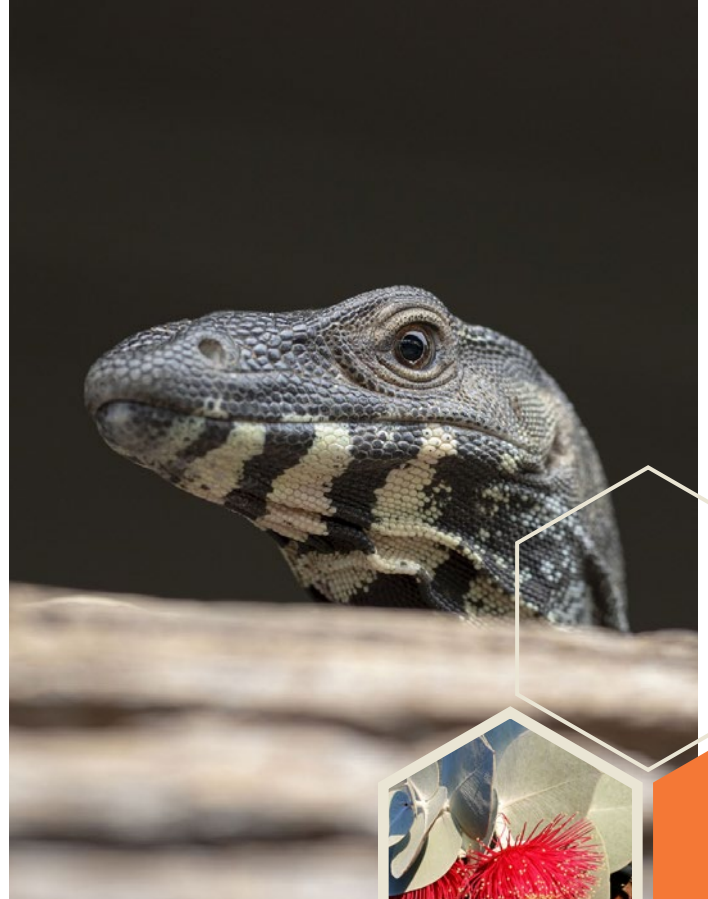


Biodiversity and bushland management

- Bush restoration activities in 38 priority bushland reserves, covering 60 hectares each year
- 20 ecological burns conducted since 2012 covering 12.5 hectares
- 99 hectare biobanking site created at Sheldon Forest, Rofe Park and Commenarra Creek Reserve
- 915 environmental volunteers dedicating 23,998 volunteer hours per year to activities that benefit the environment
- 736 dumping and encroachment issues resolved and 36 bushland reserves proactively monitored (36.3 linear kilometres).

Fauna monitoring

- Greater understanding of flora and fauna species distribution and populations through the fauna monitoring program to guide environmental and development assessments:
 - Grey-headed Flying Fox counts, noise monitoring and extent mapping conducted monthly giving a long-term indication of population trends in Ku-ring-gai Flying-Fox Reserve. Additionally, count data is also used as part of the National Flying-fox Monitoring Program
 - Eastern Pygmy Possum monitoring in collaboration with community volunteers, where 38 nest boxes are monitored quarterly providing data on populations and distribution
 - Microbat monitoring in 62 sites around Ku-ring-gai, providing insights into populations and distribution.
 - Large reserve-based fauna surveys. The most recent was a fauna survey in Sheldon Forest and Rofe Park, which will contribute to a monitoring program on how fire affects fauna.



Bushfire management

- The completion of 8 kilometres of major fire trail upgrades since 2012.

Sustainable transport and community recreation

- Creation of Jubes Mountain Bike Park
- Creation of the Warrimoo mountain bike track
- Creation of 9kms of new cycleways from Roseville to St Ives
- Maintenance of 58 kilometres of walking tracks and renewal of 10.3 kilometres of walking tracks in Ku-ring-gai since 2012.

Find out more

- W** krg.nsw.gov.au/environment
E sustainability@krg.nsw.gov.au
P 9424 0000

