

18R References

18R.1 Greenweb Maps



Ku-ring-gai Development Control Plan

Greenweb Map - Sheet Greenweb_001

DCP Greenweb Categories

- Core biodiversity lands
- Support for core biodiversity lands
- Landscape remnant
- Biodiversity corridors and buffer
- Canopy remnant

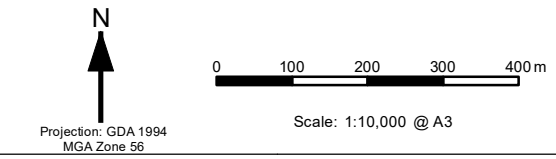
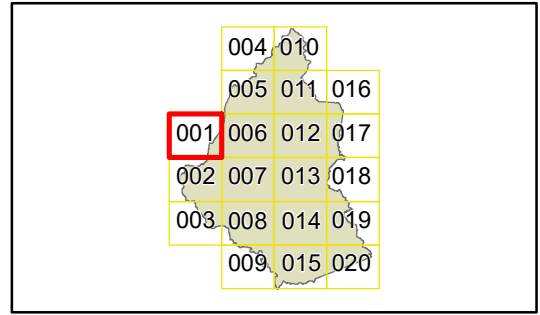
Biodiversity corridor

- Ku-ring-gai Bio & Riparian Lands Study - Version 5

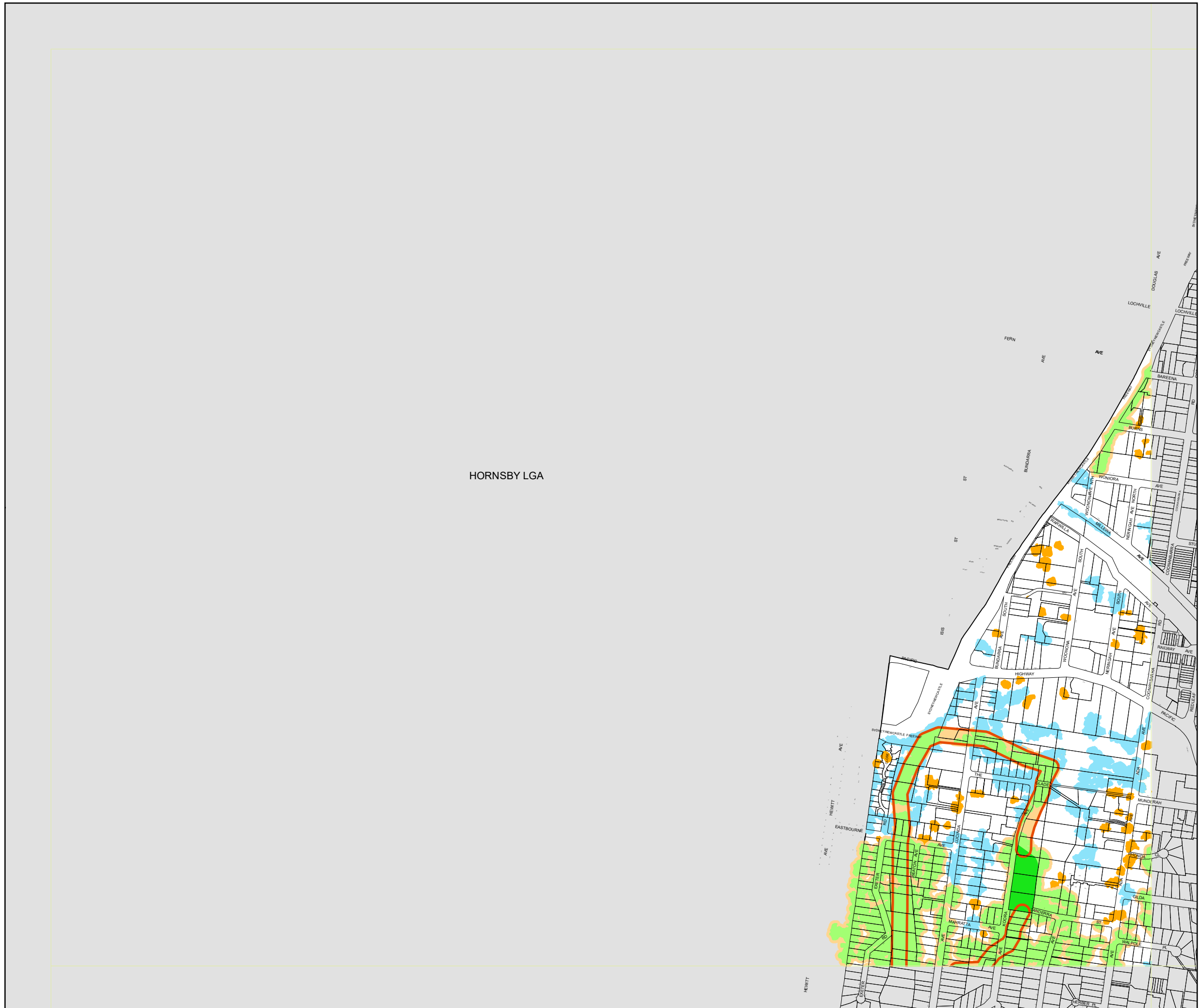
Cadastral

- Cadastral 22/07/2021 © Spatial Services

DISCLAIMER:-
This plan has been prepared as part of a review process only and as such no reliance is to be placed upon this plan as it is not and does not purport to be a Planning Instrument. Ku-ring-gai Council accepts no liability for the accuracy or otherwise of this plan.



Map identification number: 4500_COM_BIO_001_010_20210722





Ku-ring-gai Development Control Plan

Greenweb Map - Sheet Greenweb_002

DCP Greenweb Categories

- Core biodiversity lands
- Support for core biodiversity lands
- Landscape remnant
- Biodiversity corridors and buffer
- Canopy remnant

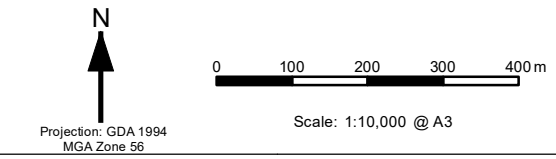
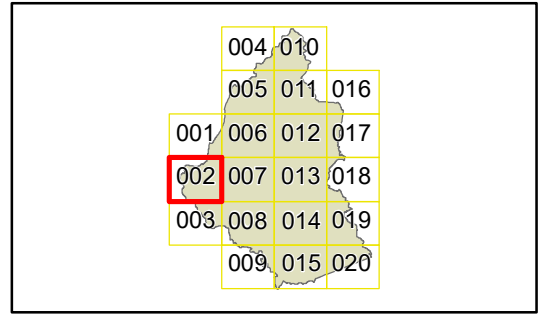
Biodiversity corridor

- Ku-ring-gai Bio & Riparian Lands Study - Version 5

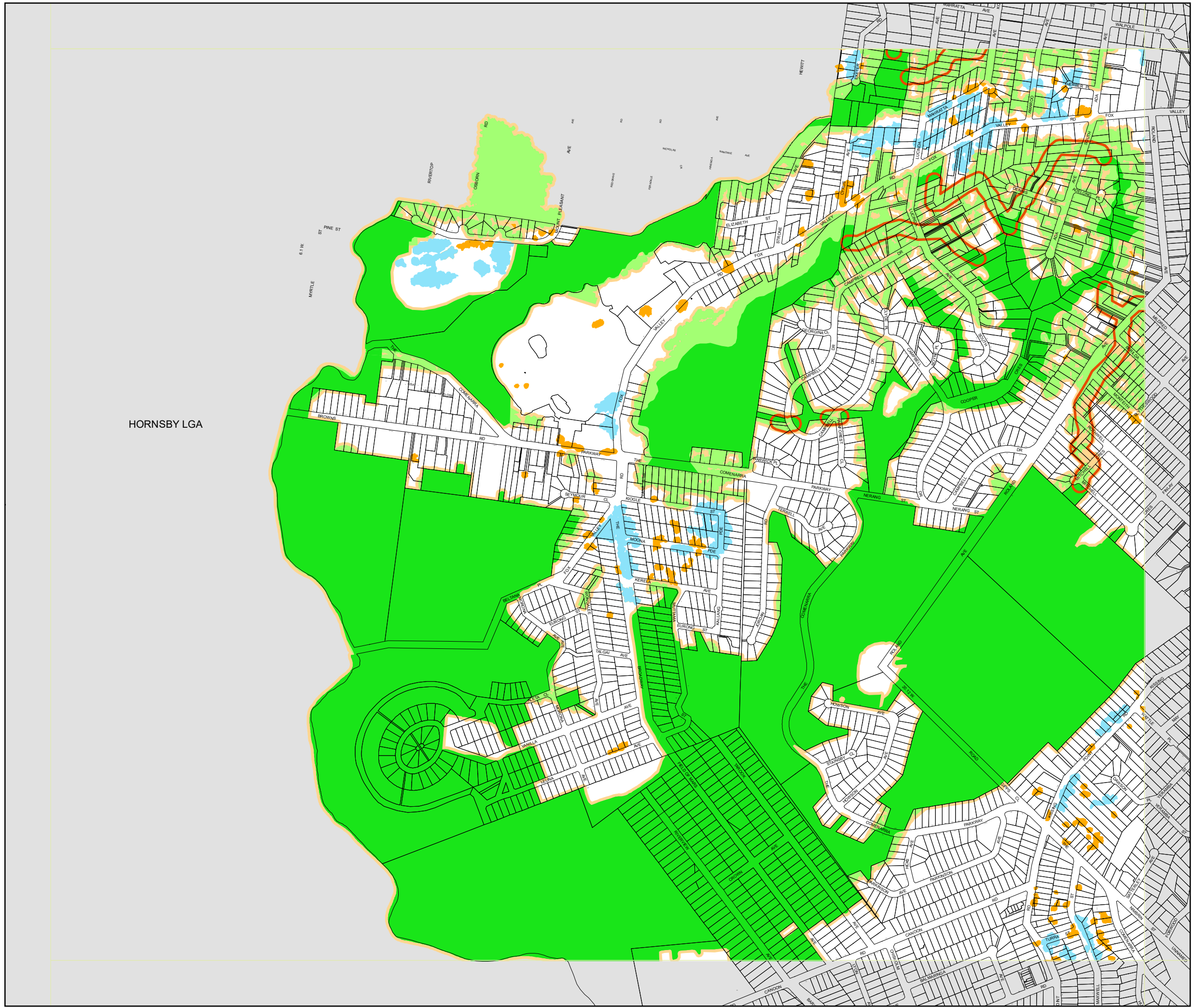
Cadastre

- Cadastre 22/07/2021 © Spatial Services

DISCLAIMER:-
This plan has been prepared as part of a review process only and as such no reliance is to be placed upon this plan as it is not and does not purport to be a Planning Instrument. Ku-ring-gai Council accepts no liability for the accuracy or otherwise of this plan.



Map identification number: 4500_COM_BIO_002_010_20210722





Ku-ring-gai Development Control Plan

Greenweb Map - Sheet Greenweb_004

DCP Greenweb Categories

- Core biodiversity lands
- Support for core biodiversity lands
- Landscape remnant
- Biodiversity corridors and buffer
- Canopy remnant

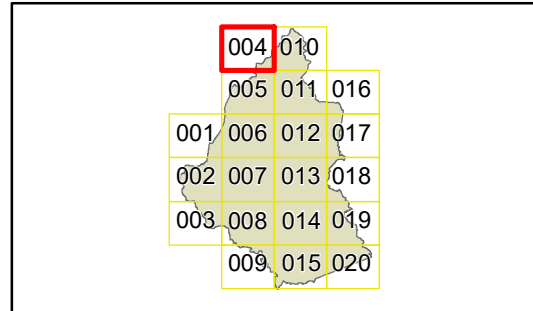
Biodiversity corridor

- Ku-ring-gai Bio & Riparian Lands Study - Version 5

Cadastre

- Cadastre 22/07/2021 © Spatial Services

DISCLAIMER:-
This plan has been prepared as part of a review process only and as such no reliance is to be placed upon this plan as it is not and does not purport to be a Planning Instrument. Ku-ring-gai Council accepts no liability for the accuracy or otherwise of this plan.



Projection: GDA 1994
MGA Zone 56

Scale: 1:10,000 @ A3

Map identification number: 4500_COM_BIO_004_010_20210722





Ku-ring-gai Development Control Plan

Greenweb Map - Sheet Greenweb_005

DCP Greenweb Categories

- Core biodiversity lands
- Support for core biodiversity lands
- Landscape remnant
- Biodiversity corridors and buffer
- Canopy remnant

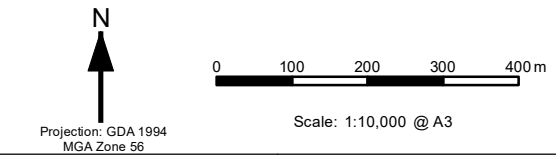
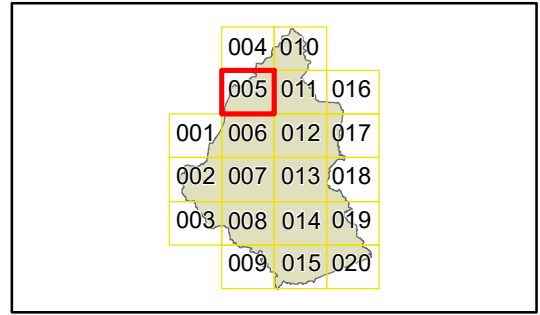
Biodiversity corridor

- Ku-ring-gai Bio & Riparian Lands Study - Version 5

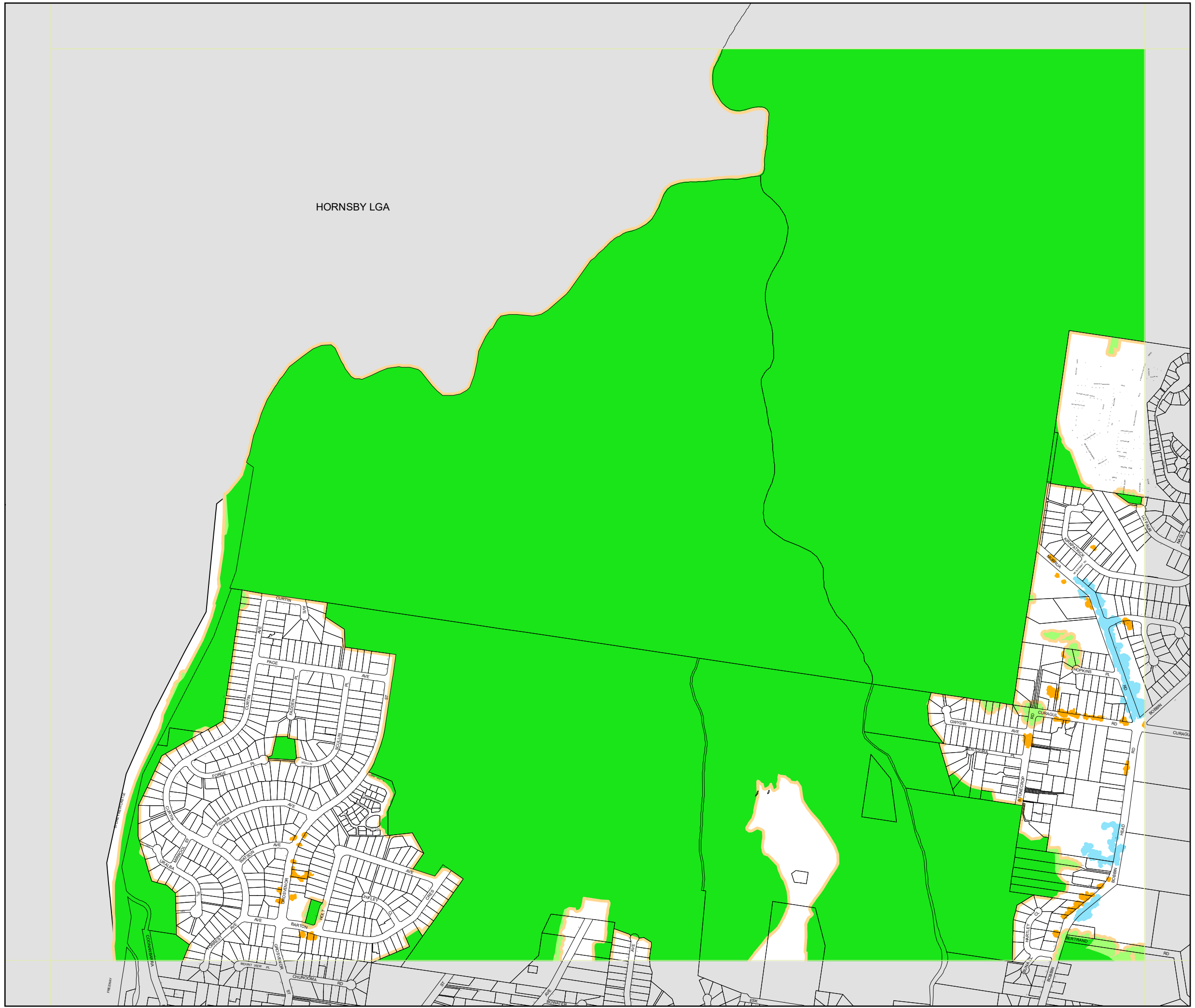
Cadastral

- Cadastral 22/07/2021 © Spatial Services

DISCLAIMER:-
This plan has been prepared as part of a review process only and as such no reliance is to be placed upon this plan as it is not and does not purport to be a Planning Instrument. Ku-ring-gai Council accepts no liability for the accuracy or otherwise of this plan.



Map identification number: 4500_COM_BIO_005_010_20210722





Ku-ring-gai Development Control Plan

Greenweb Map - Sheet Greenweb_006

DCP Greenweb Categories

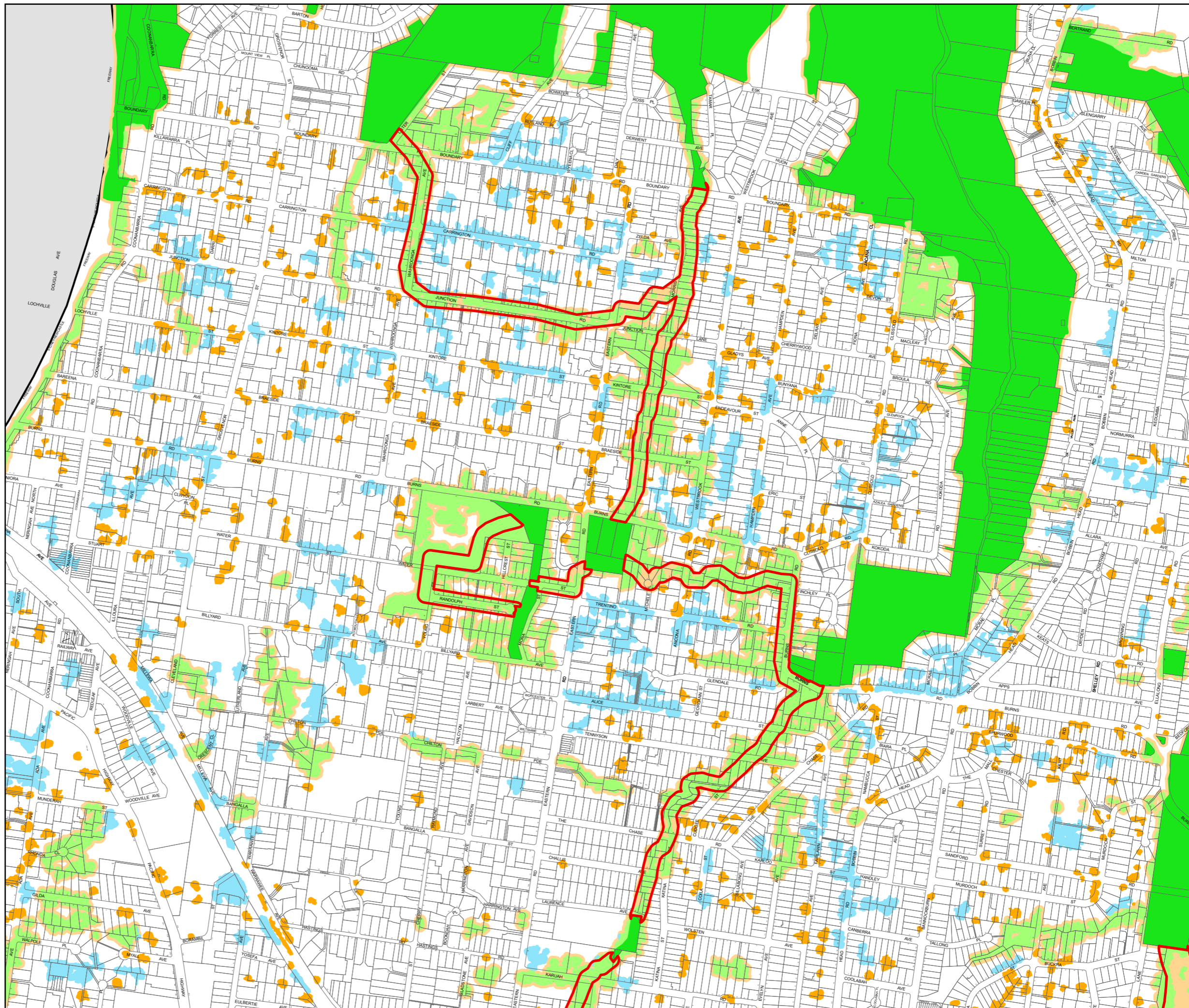
- Core biodiversity lands
- Support for Core Biodiversity Lands
- Landscape remnant
- Biodiversity Corridors and Buffer Areas
- Canopy Remnant

Biodiversity corridor

- Ku-ring-gai Bio & Riparian Lands Study - Version 5

Cadastre

- Cadastre 03/04/2024 © Spatial Services



	004	010	
	005	011	016
001	006	012	017
002	007	013	018
003	008	014	019
	009	015	020



0 200 400m

Projection: GDA 1994
MGA Zone 56

Scale: 1:10,000 @ A3

Map identification number: 4500_COM_BIO_006_010_20240403



Ku-ring-gai Development Control Plan

Greenweb Map - Sheet Greenweb_007

DCP Greenweb Categories

- Core biodiversity lands
- Support for core biodiversity lands
- Landscape remnant
- Biodiversity corridors and buffer
- Canopy remnant

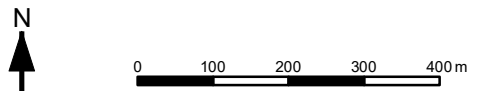
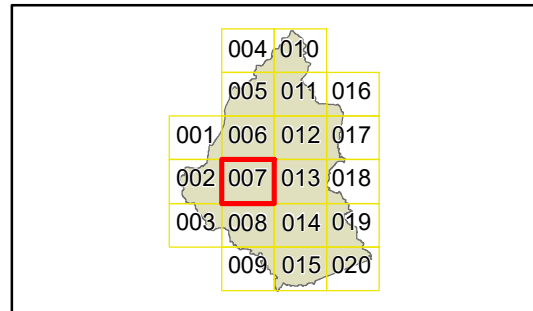
Biodiversity corridor

- Ku-ring-gai Bio & Riparian Lands Study - Version 5

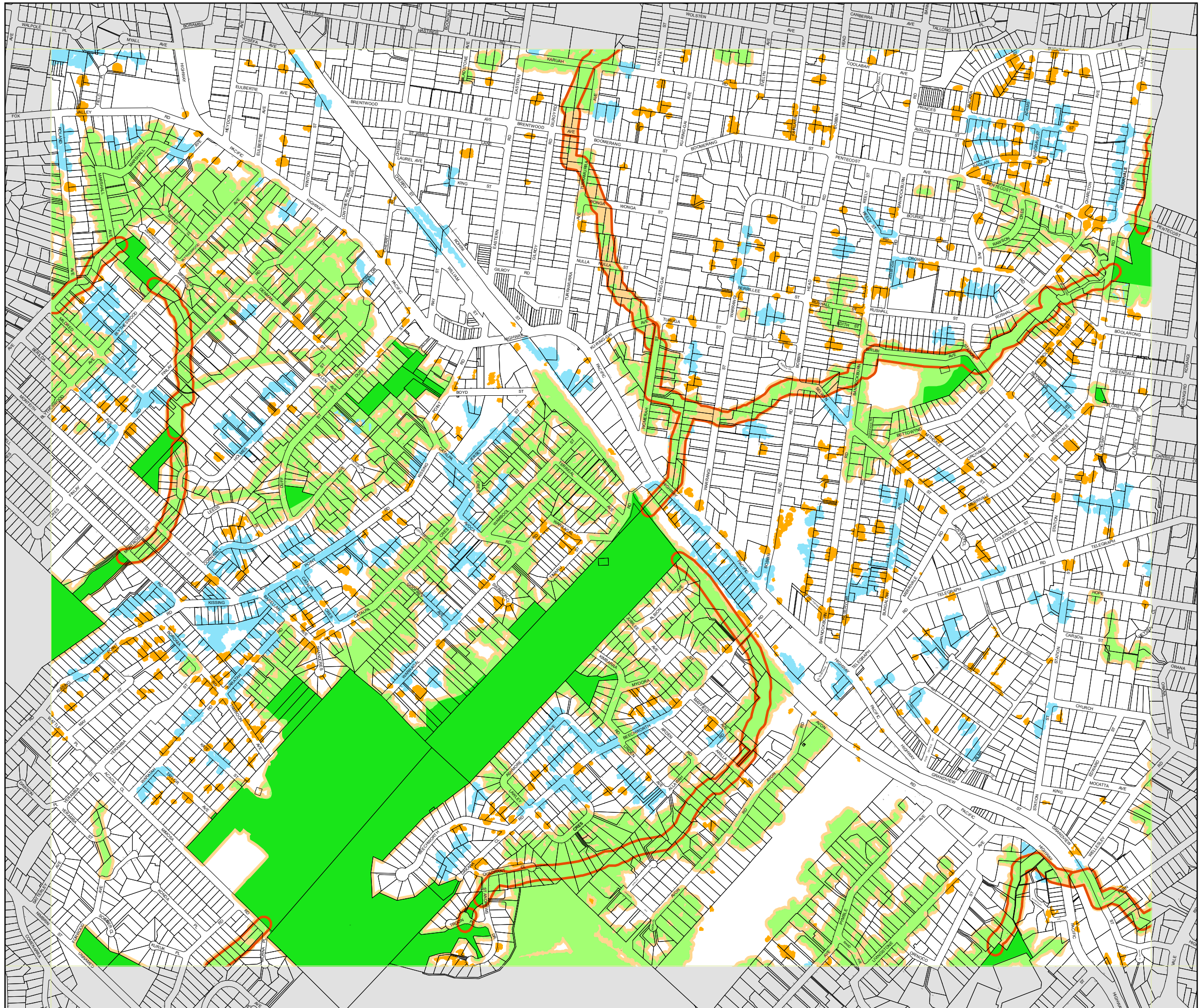
Cadastrate

- Cadastrate 22/07/2021 © Spatial Services

DISCLAIMER:-
This plan has been prepared as part of a review process only and as such no reliance is to be placed upon this plan as it is not and does not purport to be a Planning Instrument. Ku-ring-gai Council accepts no liability for the accuracy or otherwise of this plan.



Projection: GDA 1994
MGA Zone 56
Map identification number: 4500_COM_BIO_007_010_20210722





Ku-ring-gai Development Control Plan

Greenweb Map - Sheet Greenweb_008

DCP Greenweb Categories

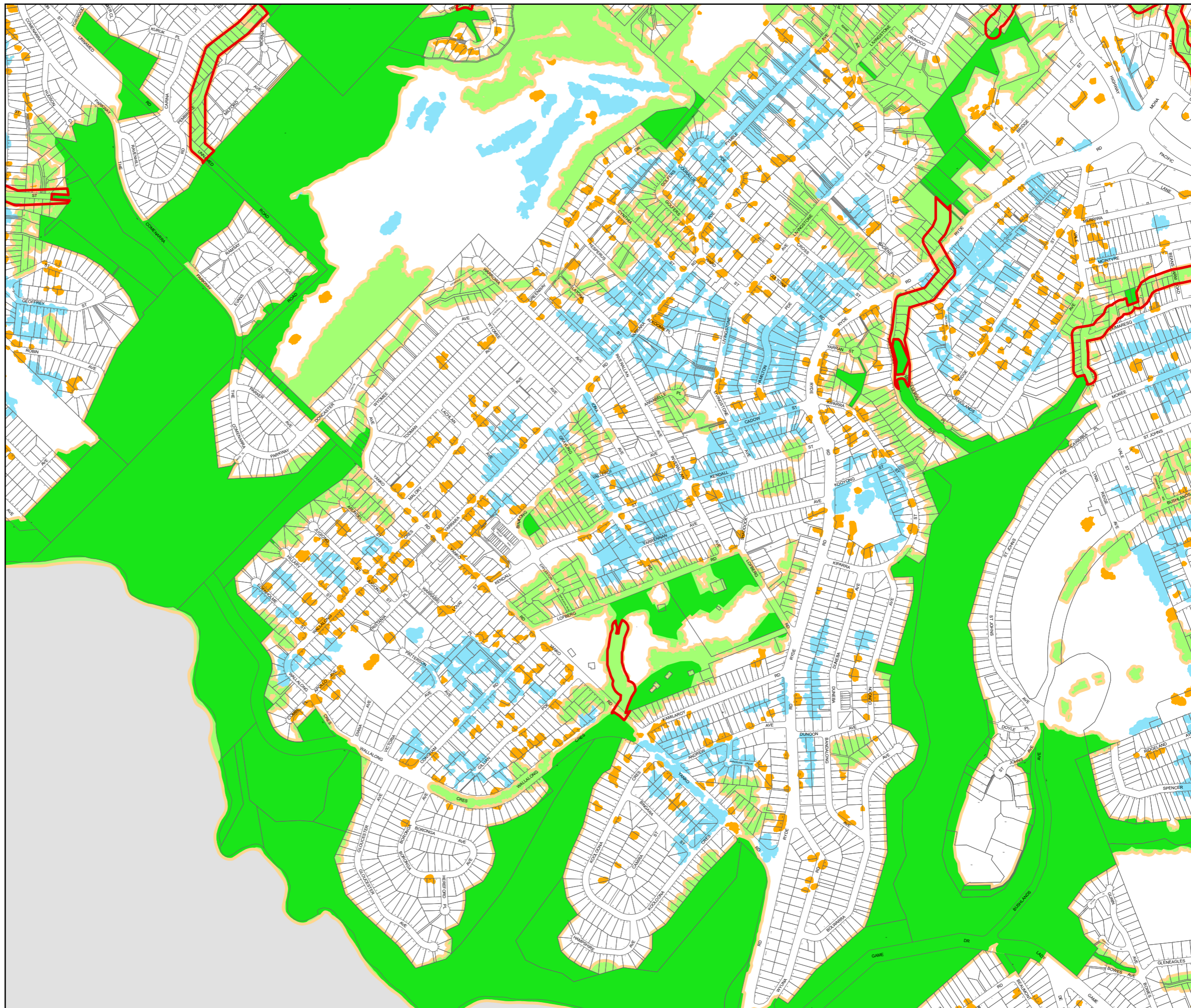
- Core biodiversity lands
- Support for Core Biodiversity Lands
- Landscape remnant
- Biodiversity Corridors and Buffer Areas
- Canopy Remnant

Biodiversity corridor

- Ku-ring-gai Bio & Riparian Lands Study - Version 5

Cadastre

- Cadastre 03/04/2024 © Spatial Services



004	010		
005	011	016	
001	006	012	017
002	007	013	018
003	008	014	019
009	015	020	



0 200 400m

Projection: GDA 1994
MGA Zone 56

Scale: 1:10,000 @ A3

Map identification number: 4500_COM_BIO_008_010_20240403



Ku-ring-gai Development Control Plan

Greenweb Map - Sheet Greenweb_009

DCP Greenweb Categories

- Core biodiversity lands
- Support for core biodiversity lands
- Landscape remnant
- Biodiversity corridors and buffer
- Canopy remnant

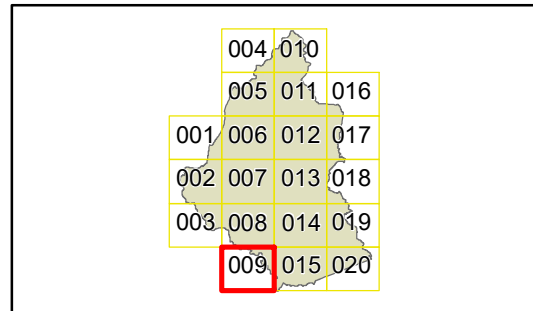
Biodiversity corridor

- Ku-ring-gai Bio & Riparian Lands Study - Version 5

Cadastrate

- Cadastrate 22/07/2021 © Spatial Services

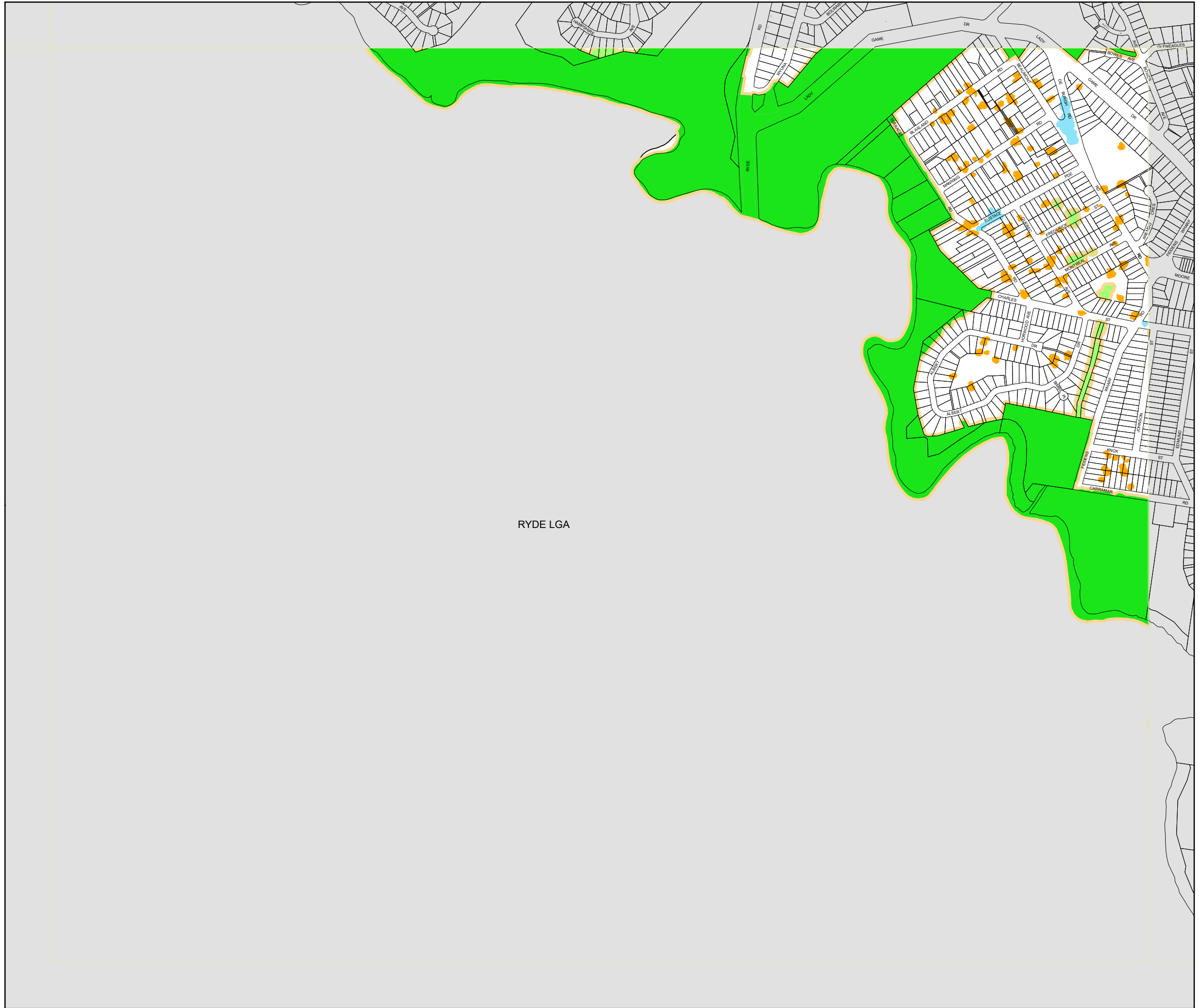
DISCLAIMER:-
This plan has been prepared as part of a review process only and as such no reliance is to be placed upon this plan as it is not and does not purport to be a Planning Instrument. Ku-ring-gai Council accepts no liability for the accuracy or otherwise of this plan.



Projection: GDA 1994
MGA Zone 56

Scale: 1:10,000 @ A3

Map identification number: 4500_COM_BIO_009_010_20210722





Ku-ring-gai Development Control Plan

Greenweb Map - Sheet Greenweb_010

DCP Greenweb Categories

- Core biodiversity lands
- Support for core biodiversity lands
- Landscape remnant
- Biodiversity corridors and buffer
- Canopy remnant

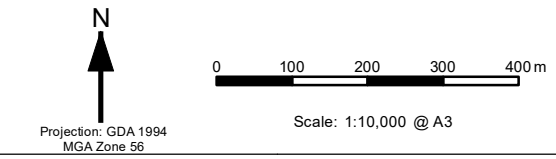
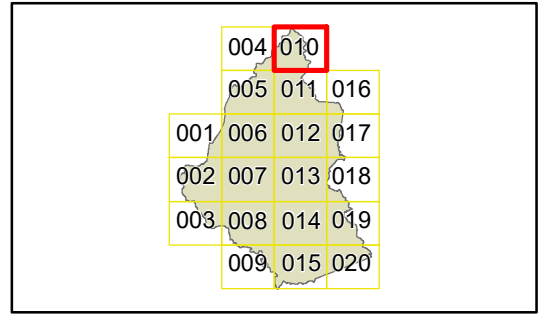
Biodiversity corridor

- Ku-ring-gai Bio & Riparian Lands Study - Version 5

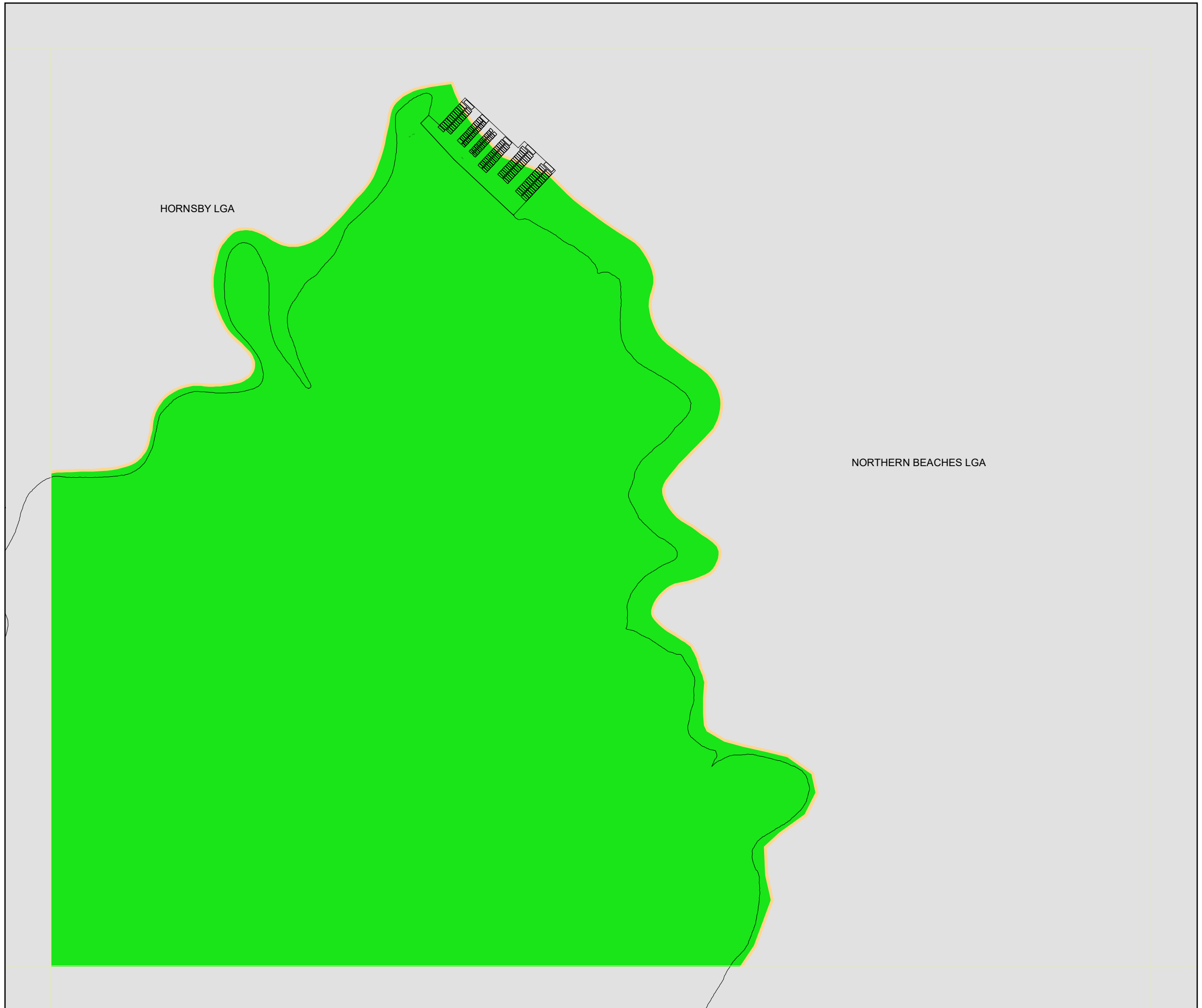
Cadastre

- Cadastre 22/07/2021 © Spatial Services

DISCLAIMER:-
This plan has been prepared as part of a review process only and as such no reliance is to be placed upon this plan as it is not and does not purport to be a Planning Instrument. Ku-ring-gai Council accepts no liability for the accuracy or otherwise of this plan.



Map identification number: 4500_COM_BIO_010_010_20210722





Ku-ring-gai Development Control Plan

Greenweb Map - Sheet Greenweb_011

DCP Greenweb Categories

- Core biodiversity lands
- Support for core biodiversity lands
- Landscape remnant
- Biodiversity corridors and buffer
- Canopy remnant

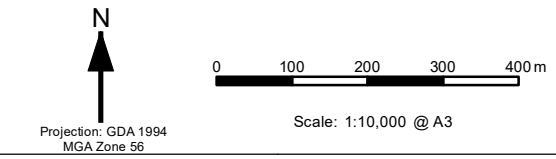
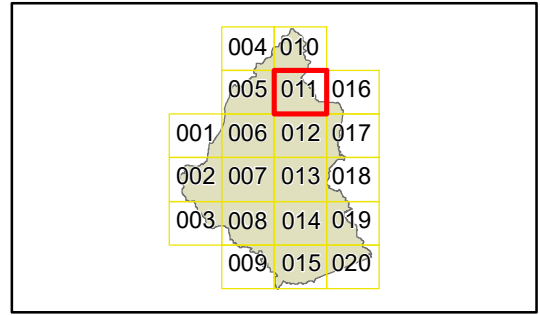
Biodiversity corridor

- Ku-ring-gai Bio & Riparian Lands Study - Version 5

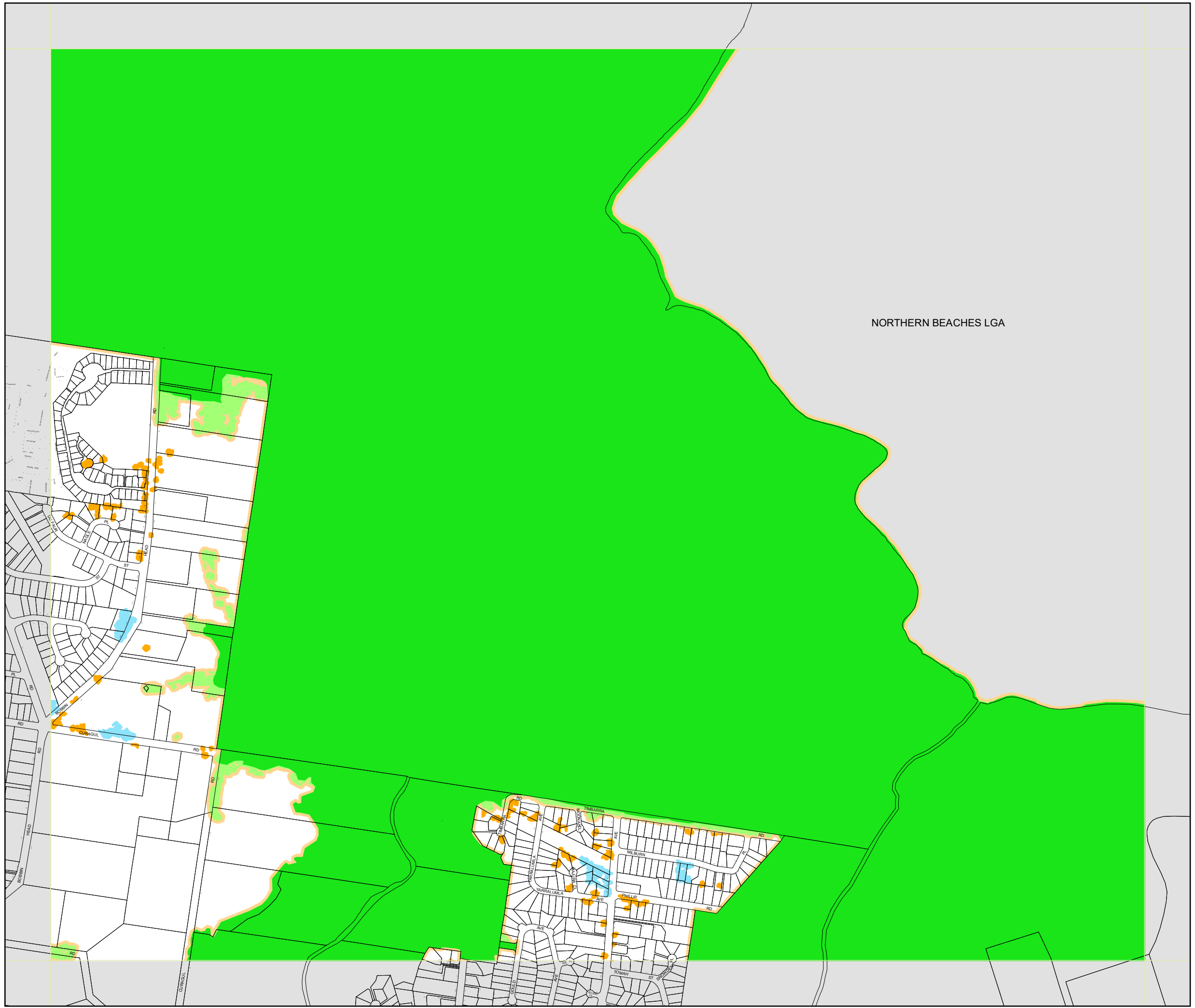
Cadastral

- Cadastre 22/07/2021 © Spatial Services

DISCLAIMER:-
This plan has been prepared as part of a review process only and as such no reliance is to be placed upon this plan as it is not and does not purport to be a Planning Instrument. Ku-ring-gai Council accepts no liability for the accuracy or otherwise of this plan.



Map identification number: 4500_COM_BIO_011_010_20210722



DCP Greenweb Categories

- Core biodiversity lands
- Support for core biodiversity lands
- Landscape remnant
- Biodiversity corridors and buffer
- Canopy remnant

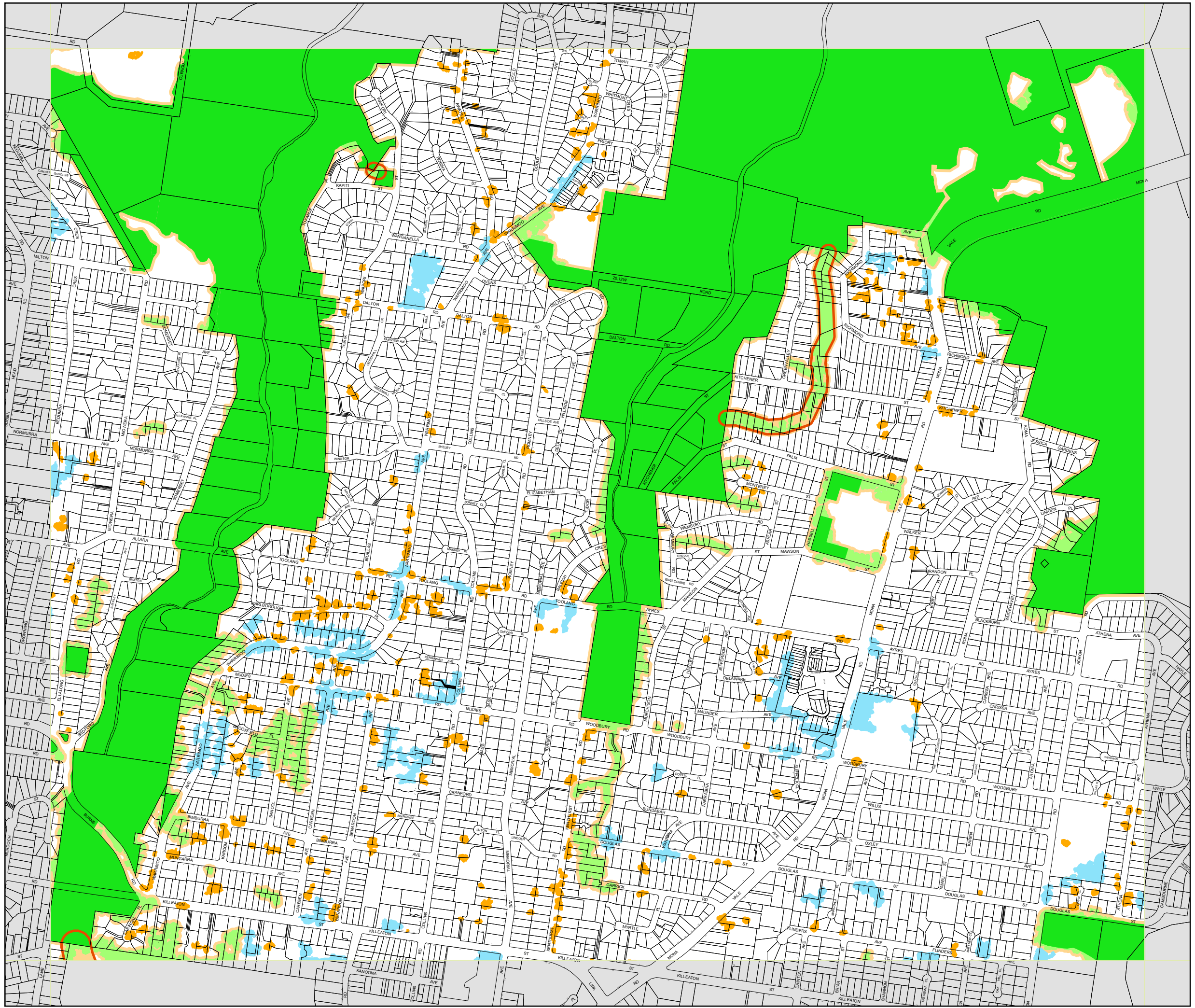
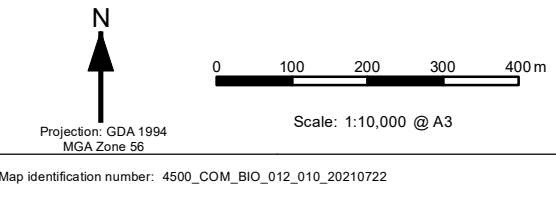
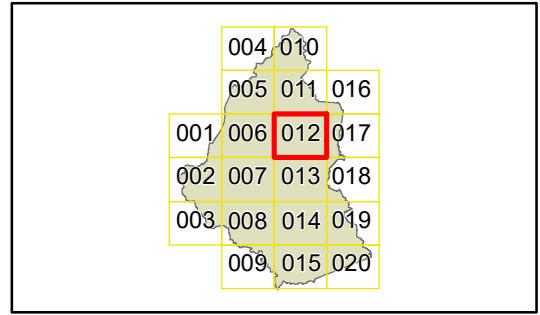
Biodiversity corridor

- Ku-ring-gai Bio & Riparian Lands Study - Version 5

Cadastre

- Cadastre 22/07/2021 © Spatial Services

DISCLAIMER:-
This plan has been prepared as part of a review process only and as such no reliance is to be placed upon this plan as it is not and does not purport to be a Planning Instrument. Ku-ring-gai Council accepts no liability for the accuracy or otherwise of this plan.





Ku-ring-gai Development Control Plan

Greenweb Map - Sheet Greenweb_013

DCP Greenweb Categories

- Core biodiversity lands
- Support for Core Biodiversity Lands
- Landscape remnant
- Biodiversity Corridors and Buffer Areas
- Canopy Remnant

Biodiversity corridor

- Ku-ring-gai Bio & Riparian Lands Study - Version 5

Cadastre

- Cadastre 03/04/2024 © Spatial Services



004	010		
005	011	016	
001	006	012	017
002	007	013	018
003	008	014	019
009	015	020	



0 200 400m

Projection: GDA 1994
MGA Zone 56

Scale: 1:10,000 @ A3

Map identification number: 4500_COM_BIO_013_010_20240403



Ku-ring-gai Development Control Plan

Greenweb Map - Sheet Greenweb_014

DCP Greenweb Categories

- Core biodiversity lands
- Support for core biodiversity lands
- Landscape remnant
- Biodiversity corridors and buffer
- Canopy remnant

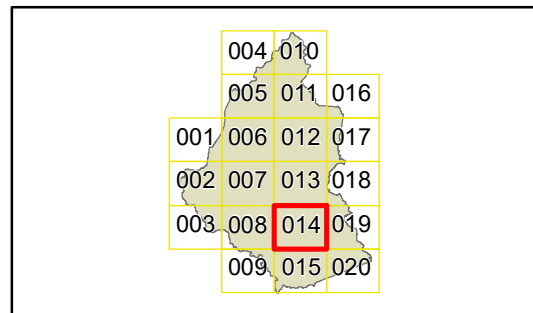
Biodiversity corridor

- Ku-ring-gai Bio & Riparian Lands Study - Version 5

Cadastre

- Cadastre 22/07/2021 © Spatial Services

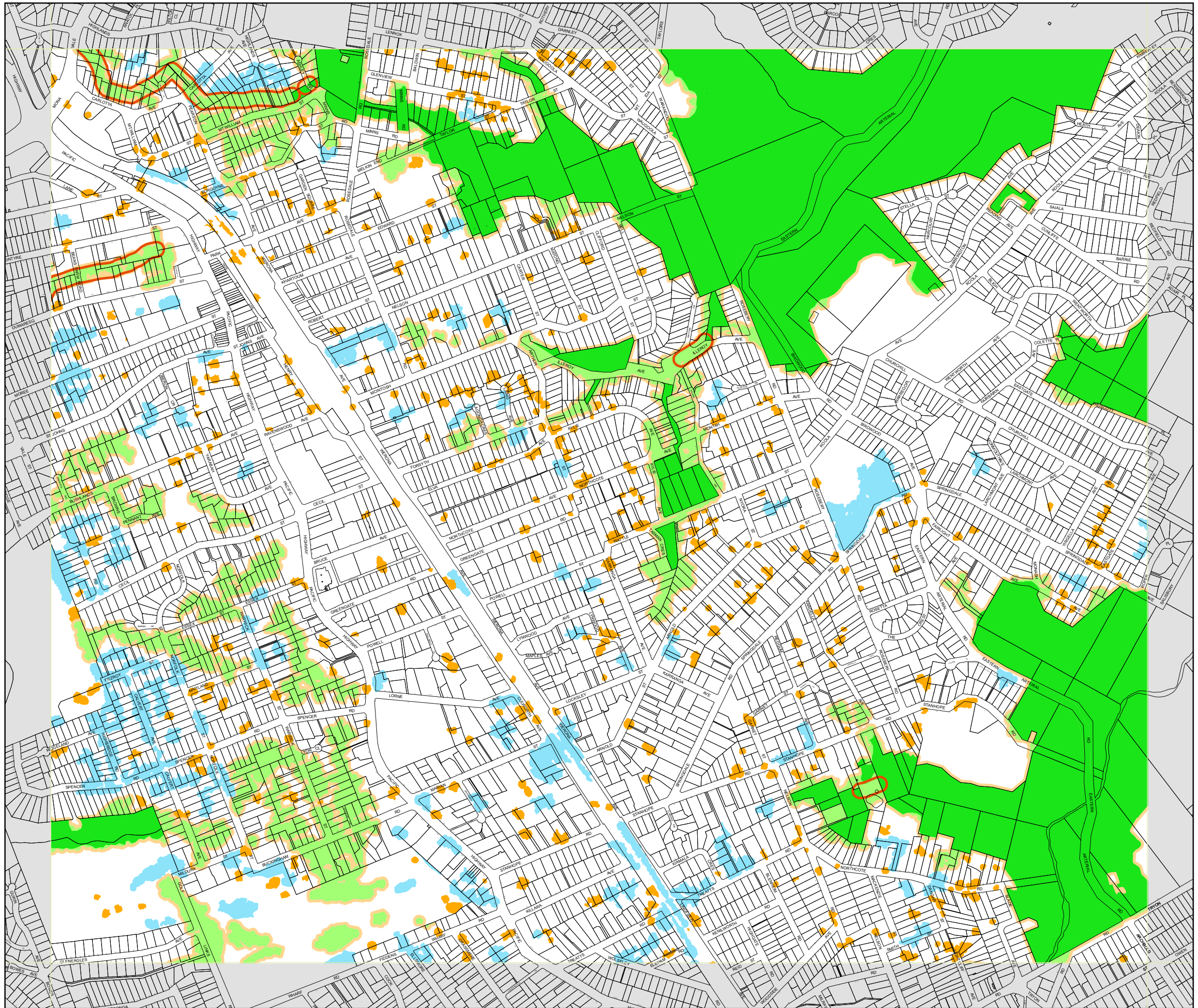
DISCLAIMER:-
This plan has been prepared as part of a review process only and as such no reliance is to be placed upon this plan as it is not and does not purport to be a Planning Instrument. Ku-ring-gai Council accepts no liability for the accuracy or otherwise of this plan.



0 100 200 300 400m

Scale: 1:10,000 @ A3

Projection: GDA 1994
MGA Zone 56
Map identification number: 4500_COM_BIO_014_010_20210722





Ku-ring-gai Development Control Plan

Greenweb Map - Sheet Greenweb_015

DCP Greenweb Categories

- Core biodiversity lands
- Support for core biodiversity lands
- Landscape remnant
- Biodiversity corridors and buffer
- Canopy remnant

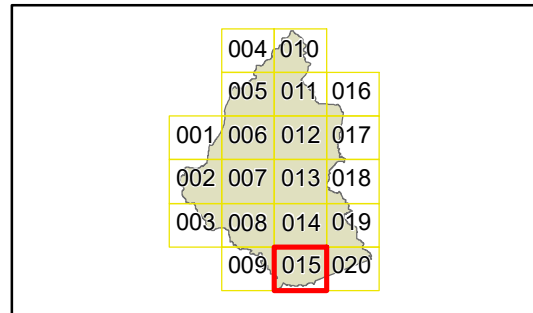
Biodiversity corridor

- Ku-ring-gai Bio & Riparian Lands Study - Version 5

Cadastre

- Cadastre 22/07/2021 © Spatial Services

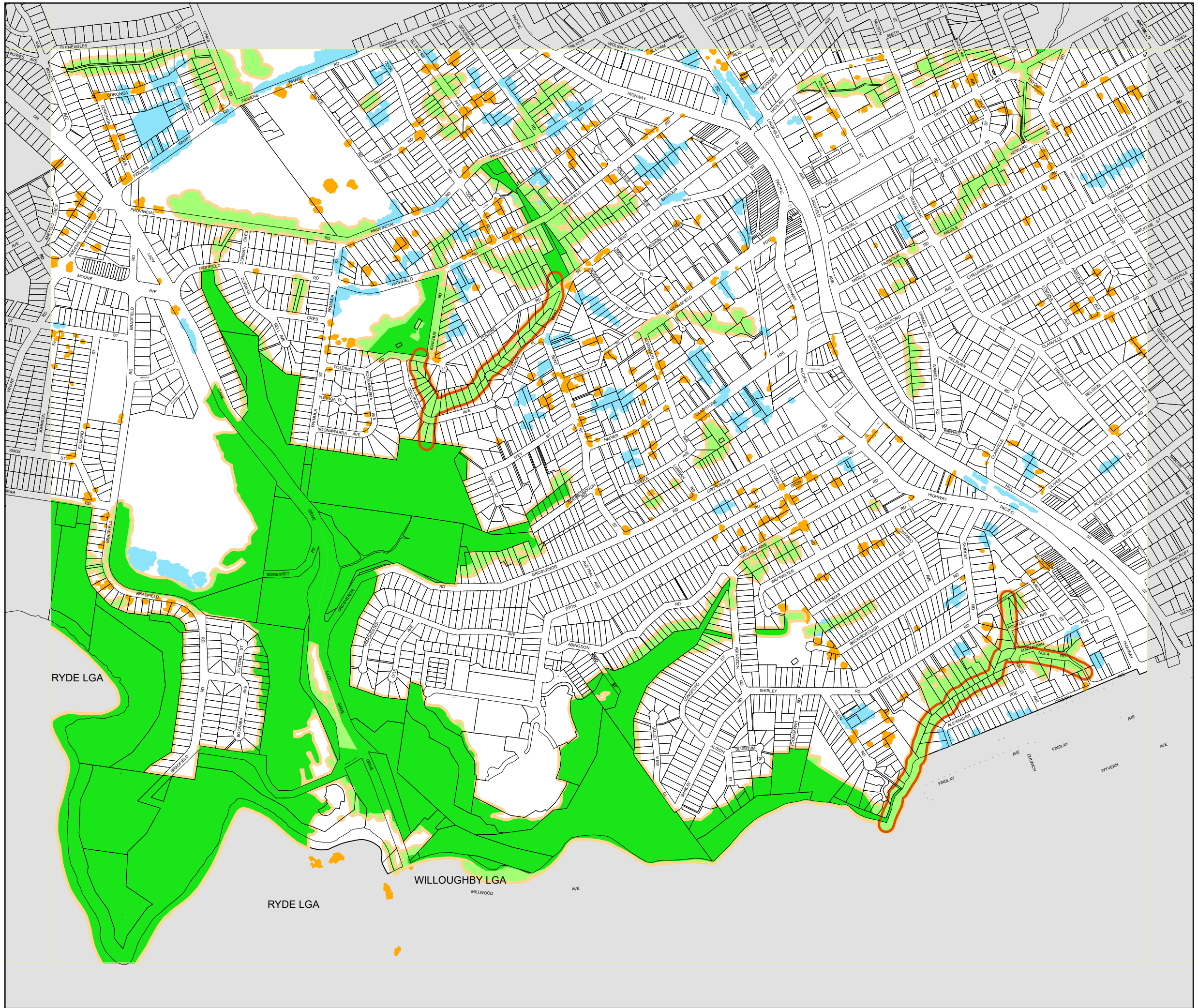
DISCLAIMER:-
This plan has been prepared as part of a review process only and as such no reliance is to be placed upon this plan as it is not and does not purport to be a Planning Instrument. Ku-ring-gai Council accepts no liability for the accuracy or otherwise of this plan.



Projection: GDA 1994
MGA Zone 56

Scale: 1:10,000 @ A3

Map identification number: 4500_COM_BIO_015_010_20210722





Ku-ring-gai Development Control Plan

Greenweb Map - Sheet Greenweb_016

DCP Greenweb Categories

- Core biodiversity lands
- Support for core biodiversity lands
- Landscape remnant
- Biodiversity corridors and buffer
- Canopy remnant

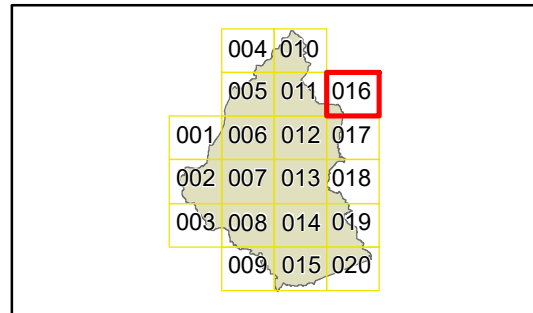
Biodiversity corridor

- Ku-ring-gai Bio & Riparian Lands Study - Version 5

Cadastral

- Cadastre 22/07/2021 © Spatial Services

DISCLAIMER:-
 This plan has been prepared as part of a review process only and as such no reliance is to be placed upon this plan as it is not and does not purport to be a Planning Instrument. Ku-ring-gai Council accepts no liability for the accuracy or otherwise of this plan.

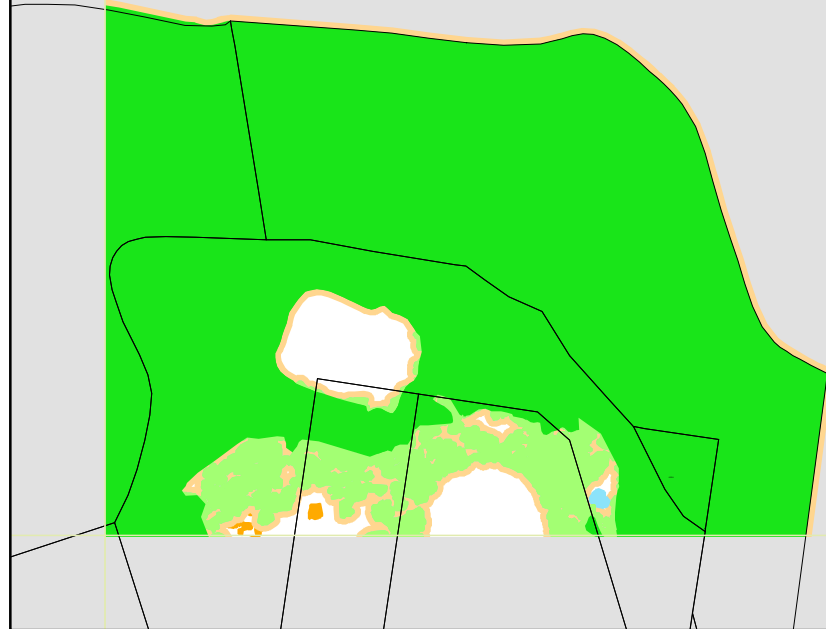


Scale: 1:10,000 @ A3

Projection: GDA 1994
MGA Zone 56

Map identification number: 4500_COM_BIO_016_010_20210722

NORTHERN BEACHES LGA





Ku-ring-gai Development Control Plan

Greenweb Map - Sheet Greenweb_017

DCP Greenweb Categories

- Core biodiversity lands
- Support for core biodiversity lands
- Landscape remnant
- Biodiversity corridors and buffer
- Canopy remnant

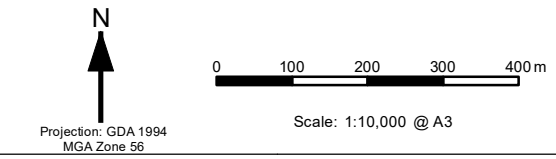
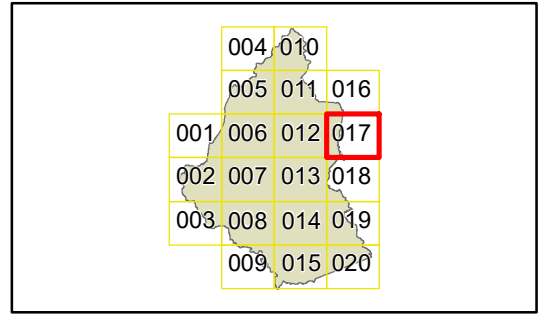
Biodiversity corridor

- Ku-ring-gai Bio & Riparian Lands Study - Version 5

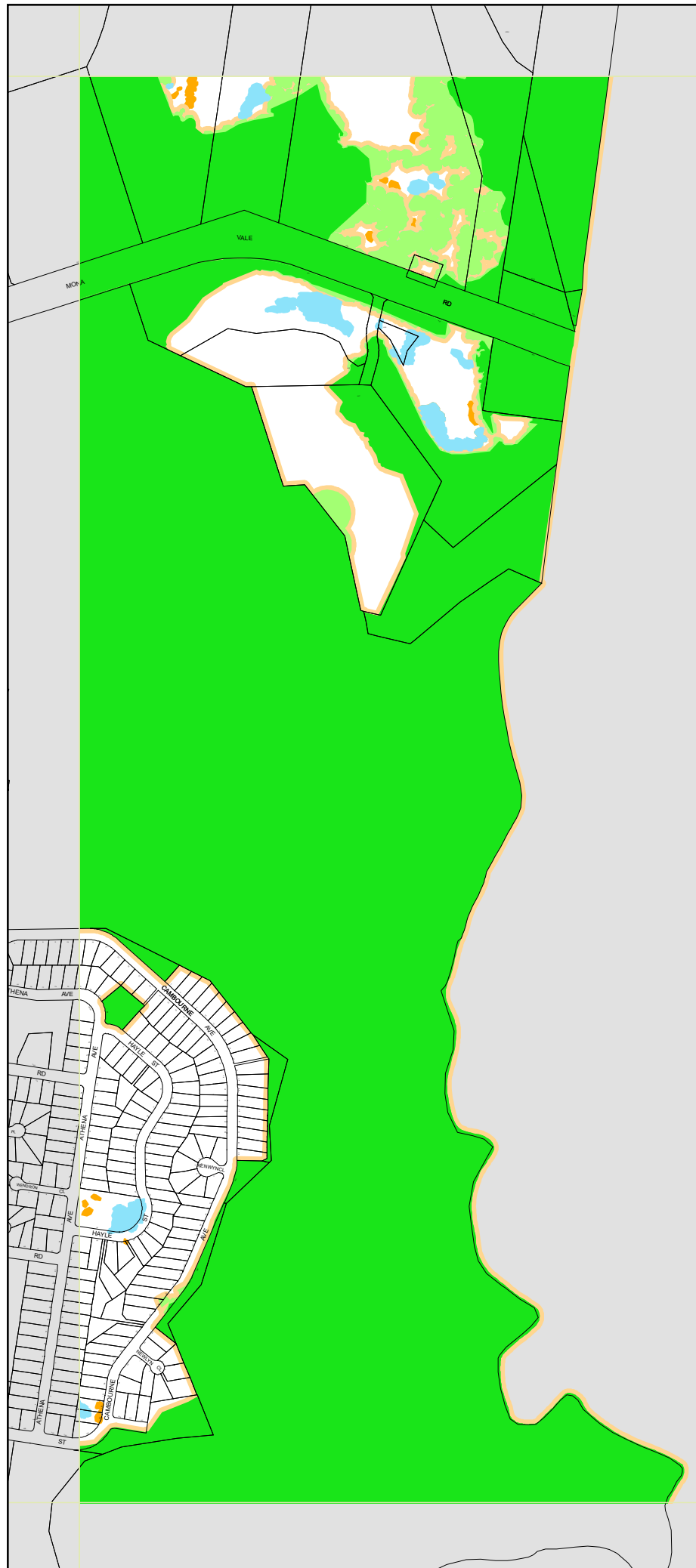
Cadastre

- Cadastre 22/07/2021 © Spatial Services

DISCLAIMER:-
 This plan has been prepared as part of a review process only and as such no reliance is to be placed upon this plan as it is not and does not purport to be a Planning Instrument. Ku-ring-gai Council accepts no liability for the accuracy or otherwise of this plan.



Map identification number: 4500_COM_BIO_017_010_20210722



NORTHERN BEACHES LGA



Ku-ring-gai Development Control Plan

Greenweb Map - Sheet Greenweb_018

DCP Greenweb Categories

- Core biodiversity lands
- Support for core biodiversity lands
- Landscape remnant
- Biodiversity corridors and buffer
- Canopy remnant

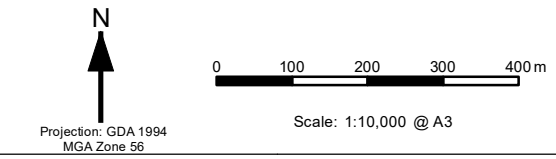
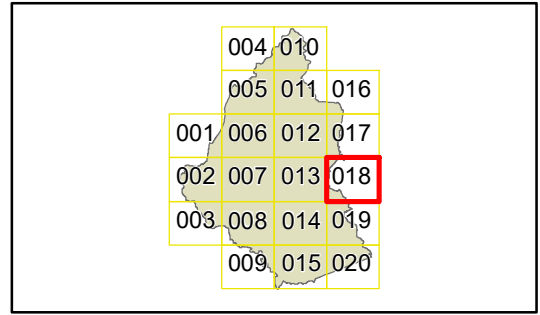
Biodiversity corridor

- Ku-ring-gai Bio & Riparian Lands Study - Version 5

Cadastral

- Cadastre 22/07/2021 © Spatial Services

DISCLAIMER:-
This plan has been prepared as part of a review process only and as such no reliance is to be placed upon this plan as it is not and does not purport to be a Planning Instrument. Ku-ring-gai Council accepts no liability for the accuracy or otherwise of this plan.



Map identification number: 4500_COM_BIO_018_010_20210722





Ku-ring-gai Development Control Plan

Greenweb Map - Sheet Greenweb_019

DCP Greenweb Categories

- Core biodiversity lands
- Support for core biodiversity lands
- Landscape remnant
- Biodiversity corridors and buffer
- Canopy remnant

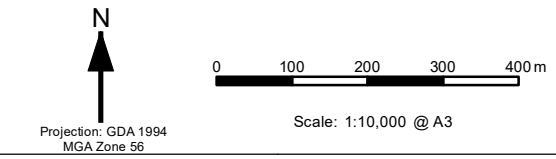
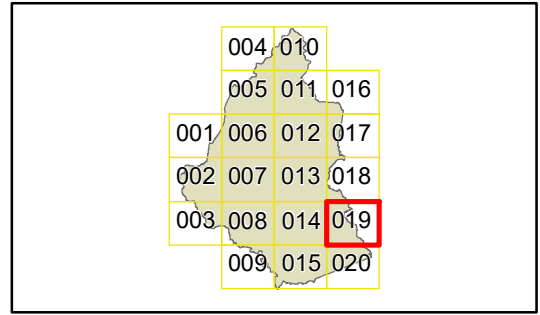
Biodiversity corridor

- Ku-ring-gai Bio & Riparian Lands Study - Version 5

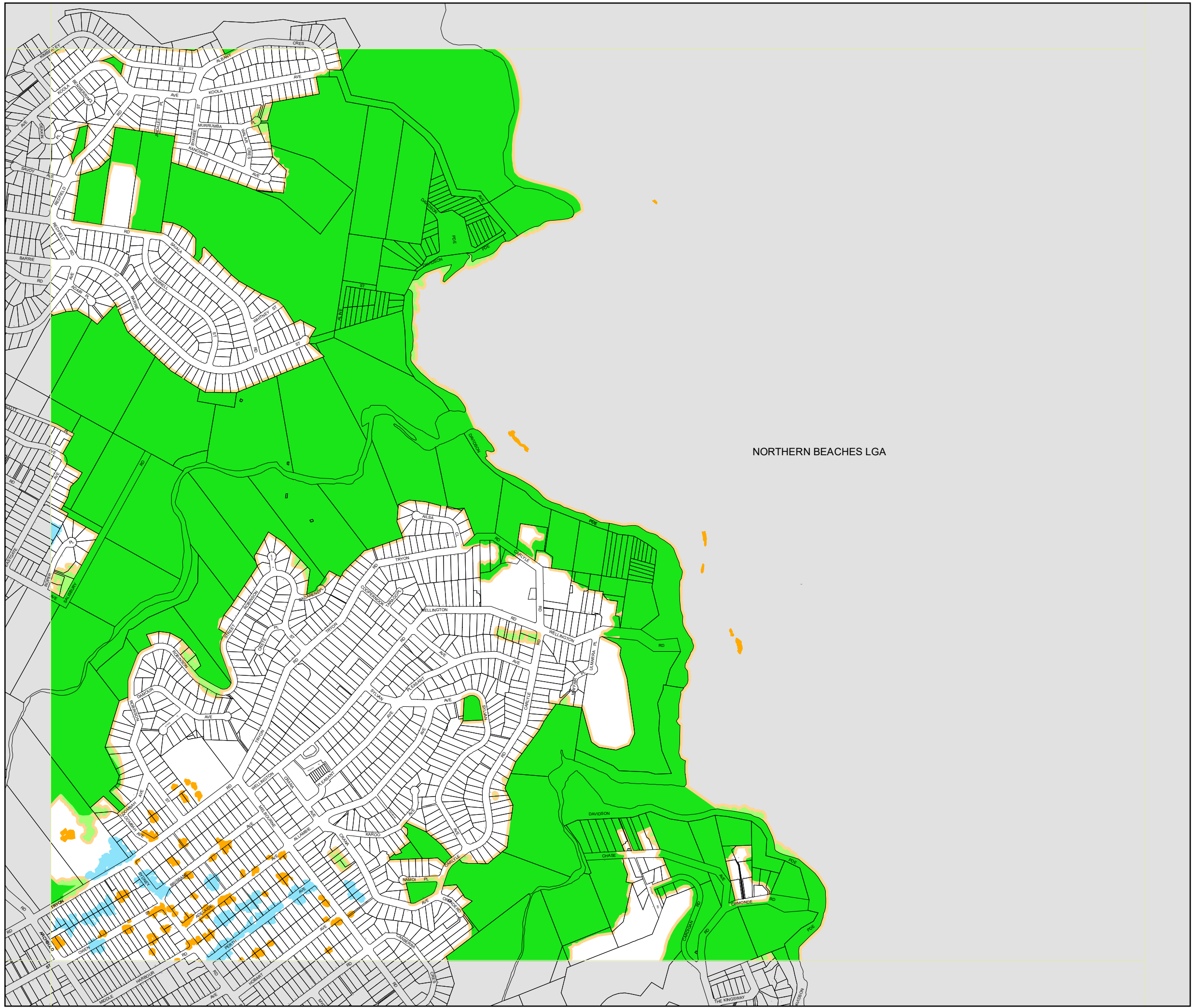
Cadastre

- Cadastre 22/07/2021 © Spatial Services

DISCLAIMER:-
This plan has been prepared as part of a review process only and as such no reliance is to be placed upon this plan as it is not and does not purport to be a Planning Instrument. Ku-ring-gai Council accepts no liability for the accuracy or otherwise of this plan.



Map identification number: 4500_COM_BIO_019_010_20210722





Ku-ring-gai Development Control Plan

Greenweb Map - Sheet Greenweb_020

DCP Greenweb Categories

- Core biodiversity lands
- Support for core biodiversity lands
- Landscape remnant
- Biodiversity corridors and buffer
- Canopy remnant

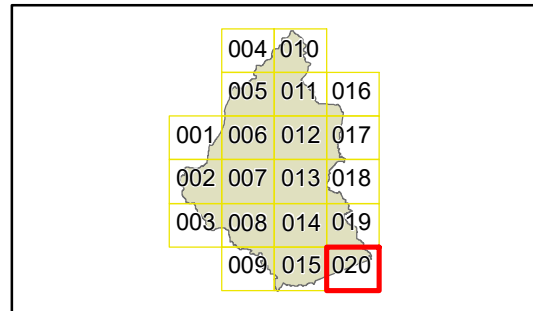
Biodiversity corridor

- Ku-ring-gai Bio & Riparian Lands Study - Version 5

Cadastre

- Cadastre 22/07/2021 © Spatial Services

DISCLAIMER:-
This plan has been prepared as part of a review process only and as such no reliance is to be placed upon this plan as it is not and does not purport to be a Planning Instrument. Ku-ring-gai Council accepts no liability for the accuracy or otherwise of this plan.



0 100 200 300 400 m

Scale: 1:10,000 @ A3

Projection: GDA 1994
MGA Zone 56

Map identification number: 4500_COM_BIO_020_010_20210722

